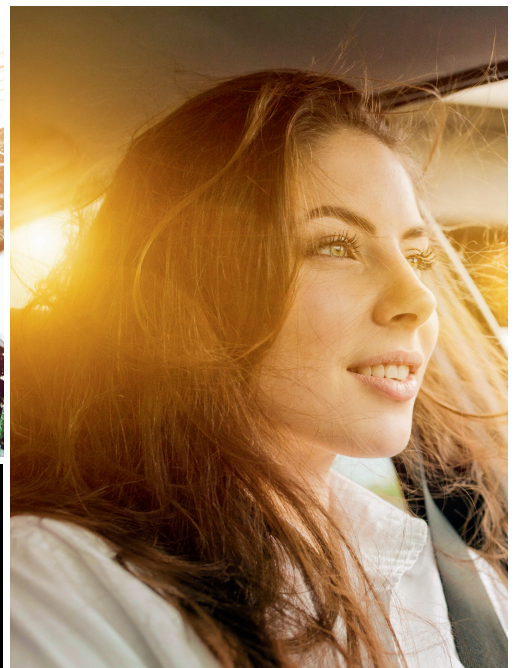




Continental
The Future in Motion



One tyre, four seasons

ENHANCED BY GERMAN TECHNOLOGY



The new AllSeasonContact™.

- › Impressive grip on snowy and wet winter roads
- › Good braking performance on dry and wet summer roads
- › Best-in-class rolling resistance performance



**Auto
EXPRESS**
ALL SEASON
TYRE TEST
WINNER
2018

GERMAN
TECHNOLOGY 

Innovating year-round safety and efficiency.

Fully controlled and balanced throughout the year.

Technical highlights.



Impressive grip on snowy and wet winter roads due to adaptive all-season compound.

With its Winter Performance Resins and a high silica fill rate in the Traction Silica Compound, the new AllSeasonContact™ always stays flexible. This adaptability ensures excellent performance on snow-covered and wet winter roads.



Good braking performance on dry and wet summer roads enabled by flexible all-season tread design.

As a trustful companion, the new AllSeasonContact™ convinces in any summer condition. Responsible for this is the combination of open shoulders for high aquaplaning performance and stiff pattern with minimum sipes for better handling and braking on dry roads.



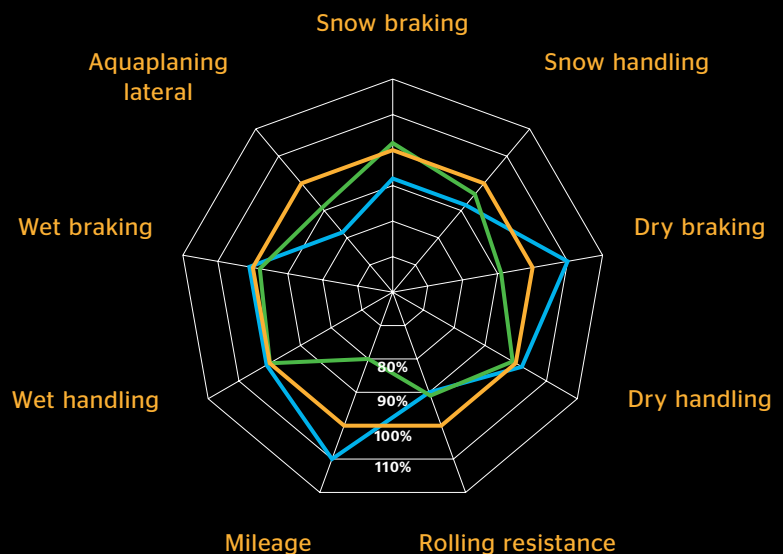
Best-in-class rolling resistance performance achieved through energy-optimised all-season construction.

The impressive decrease of the rolling resistance based on optimised sidewall construction and optimal pattern depth leads to a significant reduction of fuel consumption - without compromising on safety aspects.

Performance overview

within the premium all-season segment:

- AllSeasonContact™ = 100%
- Summer-oriented all-season tyre
- Winter-oriented all-season tyre



Tyre dimensions.

Tyre width in mm	Tyre cross section	Rim size in inches	Speed symbol
155-255	Series 40-70	14-20	H/T/V/W/Y